



Excursion

# Piazza Armerina "Villa Romana"

**Durata: 7 hours**

**Departure from: Cefalù**

Scheduled  
from **DECEMBER**  
to **NOVEMBER**  
**FRIDAY**

**Silvana Battaglia**

📍 Via Porto Salvo, 54 - Cefalù

✉ info@globatviaggi.it

☎ +39 338 4916429

☎ +39 0921 922842

The Roman Villa of Casale allows us to know the amazing artistic and manufacturing creativity of the Romans. Thanks to the Romans, who arrived in Piazza Armerina from the 3rd century BC. up to the 1st sec. A.D., they decided to create 3,500 square meters of mosaics on the floors and walls of the rooms of the entire villa. The mosaic scenes represent hunting and fishing scenes, chariot races, Ulysses and Polyphemus, musical and sporting competitions. The Romans were inspired by the gods of Greek mythology and Odyssey. The following rooms are very suggestive: the anointing room, the gym to warm up their body before bathing in the spa (Calidarium, Frigidarium, Tepidarium), the Great Hunt and the room with the girls in bikinis.

## Excursion program

Departure at **07.30 am** \* from Cefalù' railway station or from the hotel where you are staying.

Arrival at **09.30 am** in **Piazza Armerina**. Meeting with your tour guide and visit of the wonderful **Roman Villa of Casale**, characterized by 3,500 square meters of mosaics that represent the power of the Roman Empire and the daily life of the Romans.

Guided tour of the Roman Villa of Casale and admiration of the following rooms: the **Thermal Baths**, **Massage room**, **Palestra**, the **Big Game Hunt**, **Peristyle** with 32 marble columns, the **Room with the girls in Bikini**, the **Cubicle of children** (bedroom of one of the sons of the rich owner of the villa), the **Room of the four Seasons**, the **Room with the fishing Cupids**, the **Vestibule of Polyphemus** and the **Basilica**.

At **12.00 am** appointment with your tour guide and return to Cefalù '.

Expected arrival in Cefalù 'at **2.30 pm**

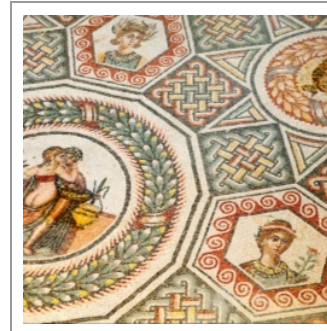
**PRICE: EURO 60.00 per person**

- Transfer by GT BUS to the various hotels where our customers stay. Final stop is the Cefalù railway station.

\* The departure time is variable in relation to the collection point (pick up).

**THE PRICE INCLUDES:** GT BUS trip, licensed tour guide and return to Cefalù '.

**THE RATE DOES NOT INCLUDE:** entrance ticket to the Roman Villa of Casale, lunch.



Find out more ... visit website